



Community Good Report 2026

Our Mission

We offer a unique venue for gatherings, exploration, learning and adventure, one that acknowledges, encompasses, and gives back to our diverse multicultural community.

Our Trust, its facilities and its programmes support the uninhibited sharing of knowledge, culture and optimism – within our walls and

throughout our community. We understand the mana inherent in our South Auckland location; we celebrate this, we learn from it every day, and we contribute to it in any way we can.

Our campus is more than the sum of its facilities and greater than any single activity it enables,

a versatile space that allows the entire community to benefit from the transformative nature of experience.

Our belief in the concept of shared betterment helps us to make sure our venue is a place where horizons are expanded, adventures are enabled, and relentless curiosity is always encouraged.

Thank you for your support as this enables a platform for long term financial stability. It is this sustainability that creates subsidised access to the facilities and programmes which are designed to engage with our community inspiring them to set a goal, follow through and achieve.



Warm greetings

We are delighted to present the **Waka Pacific Trust Community Good Report for the 2025 year**. This year has been a milestone for us, marked by the successful completion of our long-anticipated Climb Project and the continued momentum of supporting more than 100,000 children to enjoy the facilities and learning experiences offered across our campus.

Achieving the goal of hosting 100,000 children within our programmes was a long-held aspiration, first reached in 2023. We are proud that this achievement has not been a one-off event but an ongoing reality. However, we acknowledge the growing challenge schools face with transport costs, which in some cases prevent students from attending even our free programmes. While the Trust provides transport assistance where possible, the demand far exceeds our capacity.



The **Wero Climb** facility has been an instant success. Since its opening in August, nearly **7,000 children** have experienced its exhilarating heights, either free of charge or at heavily discounted rates. The wider community has embraced the facility enthusiastically, with families and friends making up the majority of users. Feedback has been overwhelmingly positive, as climbers conquer their fear of heights and rise to the challenges presented.

The **Trillian Wero Whitewater Park** continues to enjoy strong usage from a diverse range of groups, including FENZ, Te Araroa Trail users, school children, special needs students, and high-performance athletes. This world-class facility remains unique in New Zealand. Despite the ongoing financial pressure on our resources, the Trust remains committed to sustaining this vital asset.

The **Due Drop Events Centre** proudly retains its position as New Zealand’s largest school programme provider outside the classroom. Our focus remains on delivering programmes that celebrate and promote arts, culture, drama, music, and dance. As a nationally significant venue, the Centre continues to serve

as the “meeting place of South Auckland” and beyond, hosting gatherings of both national and international importance.

Finally, we extend our heartfelt thanks to our naming rights sponsors, **Due Drop Foundation** and **Trillian Trust Limited**, for their unwavering partnership and belief in the alignment of our values. Without their support, the Waka Pacific Trust could not achieve the remarkable outcomes we deliver for our community.




John Bongard
ONZM CRSNZ
Chairman




David Comery
Chief Executive



Due Drop Events Centre Schools' Programme



In 2025, the Schools and Community Programme, proudly supported by the Due Drop Foundation, enabled 86,314 children and young people to enjoy subsidised or fully sponsored creative arts experiences.

We strengthened our long-standing partnerships while welcoming exciting new collaborators. Joining the line-up this year were the New Zealand Symphony Orchestra, Robot Lab, and other innovative contributors. The Royal New Zealand Ballet, Manukau Symphony Orchestra, Pacifica Arts Centre, and Atamira Dance Company continued their valued association with us.

With the support of the Due Drop Foundation, Waka Pacific Trust has been able to assist schools and community groups by covering artists' fees, venue hire, audiovisual costs, and labour – ensuring these experiences remain accessible and impactful.

The passing of Tim Bray left a significant gap in our school offerings. We are actively seeking a key partner in stage production to

continue this important work. In the meantime, the National Youth Theatre stepped up this year, and we look forward to building a strong partnership with them in the future.

Manukau Symphony Orchestra School Programme

We welcomed 2,328 students from 39 schools to the Four Winds Theatre. Across four sessions students enjoyed well-known orchestral pieces along with captivating stories set to music and narrated by Suzy Cato.



Working with acclaimed Conductor, Uwe Grodd, has been wonderful as his infectious enthusiasm really resonates with the children.

This programme continues in 2026 with one of the most famous storybook concerts of all.... Peter and the Wolf. Suzy will read as the orchestra plays the well-known favourites.

The best part of the performance was:

"The Star Wars music because I like loud and medium-paced music". Brax (year 4) Brookby School.

"When the harp and the cello collabed". Yisrael (year 6), Randwick Park School.

"I really enjoyed seeing all the instruments and hearing the different music". To'oa (year 3) Holy Cross Catholic School, Papatoetoe.



Experience Pacifica

Spread across two days we welcomed six schools: Kia Aroha Campus; Homai School; Homeschool Group; Kauri Flats Primary School; Yendarra School, and Te Ara Poutama AE Centre to take part in the Experience Pacifica workshops.



Inspired by traditional Pacific legends, the programme encourages students to share, experience and explore Pacific arts and culture.

Students learn basic drumbeat patterns, practice dance movements and create works of art inspired by Pacific traditions.

2026 is already fully subscribed.

Atamira Dance Company



In May six schools took part in the Kori Purakau Workshops hosted by the Atamira Company over three days. Mayfield Primary, Redhill School, Hobsonville Point Primary, Holy Trinity School and TKKM Manurewa each brought 60 students to experience the art of storytelling through dance.

What skills did you learn from this workshop?

"Dancing skills and different moves".
Daniella, year 7.

Communicating to others about what I want to do". Sokopeti, year 8.

"I learned that movement can tell more of a story". Manvariki, year 8.

"How to express your body". Akanesi, year 8.

"I learnt to be more confident in myself".
Corinthian, year 8.



New Zealand Symphony Orchestra

For the first time our schools programme partnered with the NZSO. The two-day residency included a relaxed concert designed for neuro-divergent audiences as well as two concerts for school students. We had 1,077 students attend these sessions.

Guide Dog Training

In June this year we welcomed both the NZSO and Blind Low Visions NZ's guide dogs in the pilot collaboration between both of them to a training in the Four Winds Theatre.

Following the approval of the Audience Accessibility and Participation Policy by the NZSO Board, NZSO has been developing community engagement including fringe community groups.



Royal New Zealand Ballet

"Ballet in a Box" and "DANCEwithME"

Our most in-demand programme, delivered in collaboration with the Royal New Zealand Ballet Company was held in early September. This included "Ballet in a Box" and "DANCEwithME".

Over four sessions, 1,588 students from 18 schools experienced Ballet in a Box, which featured a relaxed performance in a sensory-friendly environment with an NZ Sign interpreter. A relaxed performance takes a more casual approach to front-of-house etiquette and to the noise levels within the theatre. It is best suited, though

not limited, to those on the autism spectrum with special needs or with other sensitivity considerations, providing a comfortable and inclusive environment to enjoy the performance. The aim is to minimize anxiety and ensure that every attendee feels safe and welcome in the theatre environment.

DANCEwithME is a fun, creative and collaborative programme where the Royal New Zealand Ballet artists visit participating schools over a six-week period. Together, the artists and students workshop and choreograph an original dance piece which culminates in a final performance on stage in the Four Winds Theatre.

All participating schools come together to share and celebrate their work.

This programme continues to grow every year. We were especially pleased to welcome two new schools to the programme and we look forward to that connection growing into the future.



Funfest

Every January, the Due Drop Events Centre, in conjunction with the FunFest Charitable Foundation, which is in turn funded by Trillian Trust Limited, hosts FunFest.

Tens of thousands of people come together on our campus to enjoy family time on joy rides and fun times.

With free entry, parking, rides, prizes and entertainment for all ages, FunFest is a “must do” for our community.

In 2025, we hosted the largest attendee level yet with more than 50,000 people enjoying the fun and the sun in a safe, controlled and family-friendly environment.

As a much-loved annual tradition, we are proud to support FunFest and all that it represents: unity, celebration and great family fun for our community.



World Dance Crew Championships

In April we hosted this inaugural major international event proudly owned by New Zealand.

We welcomed the best dance crews from around the world including participants from Asia, North America, South America, Europe, Australia and of course New Zealand.

There were 834 dancers competing throughout the week-long event.

As part of this event, the NZ College Dance Crew Championships were held giving students the chance to earn NCEA credits while competing on a true world stage in front of international judges.



Due Drop Events Centre Statistics 2026



86,314

children and youth engaged in school and community events



\$622,026.48

total community good value



131

schools participated in LEOTC programmes



Momentum Hub

In 2025 we have had two new community- focused groups join the Momentum Hub family.

The **ASA Foundation** joined us early in the year and is a South Auckland charity helping to connect vulnerable families, community groups and churches to government agencies and providers. Edwin and Esther are on site most days and we thoroughly enjoy having them here.

Helen from **Blind Sport New Zealand** has joined the Momentum Hub family. This charity collaborates with sporting bodies and other partners to ensure that athletes with vision impairment have access to, and can participate in, sport, now and into the future.

Our other partners at Momentum Hub

- John Walker Find Your Field of Dreams
- YMCA Raise Up
- Counties Manukau Rugby League
- Hillary Outdoors
- Navigate Performance
- Youthtown
- Life Education Trust
- Manukau Symphony Orchestra





Trillian Wero Whitewater Park

BIG NEWS! Trillian Trust has come on board as our new naming rights sponsor at the whitewater park. This partnership is particularly special as Trillian Trust has been a long-time strong supporter of the Waka Pacific Trust and it is now our pleasure to welcome them into this high-profile leading role.

With the support of Trillian Trust, we are excited to continue expanding the opportunities we provide for schools and the wider community ensuring that more young people, families and visitors can experience the joy, adventure and learning that Wero offers.

This partnership strengthens our ability to inspire new generations and support our community wellbeing establishing Trillian Wero Whitewater Park as a world-class destination.

TWWP Schools Programme

Trillian Wero Whitewater Park remains committed to offering the world's largest schools and community programme for safety in and around moving water.

Through fully funded or subsidised programmes, we were able to remove financial barriers to ensure that every child and young person in our community has the opportunity to gain essential survival skills in and around moving water.

In 2025 we are proud that we were able to provide funding assistance to 18,112 students through our water safety programme – an achievement that reflects our ongoing commitment to creating safer, stronger and more confident communities.

From river crossings and water safety training to kayaking, stand up paddleboarding and rafting, students are not only immersed in fun and adventure but also equipped with skills that could one day save their lives.

These are experiences that leave a lasting impact and memories that they will carry with them for ever.



FENZ Rescue Training

We all know that teamwork makes the dream work, and this was clear when Fire and Emergency New Zealand had their Specialist Water Rescue and Urban Search and Rescue Drone teams join us for a training night at Trillian Wero Whitewater Park.

The scenario: Multiple urban streets and houses severely flooded with an unknown number of trapped or missing people.

The operation: Using infra-red/thermal cameras, the drone team located residents and then the Specialist Water Rescue Team rescued them bringing them to safety before continuing the search for further missing people.

The thermal cameras allow the emergency services to see more of the incident scene which also makes it safer for their people to operate. Training together like this makes FENZ better prepared for when the real thing happens, and we are so happy that we can offer such a wonderful training facility as Trillian Wero Whitewater Park.



Te Araroa River Crossing

In just its second year, our Te Araroa River Crossing course saw a 100% increase in participants, with 142 walkers completing the programme. The course teaches essential river skills including hydrology, assessing dynamic river environments and safe techniques for crossing and following rivers along the Te Araroa trail.

This is fast becoming a well-established and well recognised pre-requisite for the “big hike” helping participants gain confidence and practical knowledge for their journey.



John Walker Find Your Field of Dreams

Halberg Making Waves

In February and December we hosted our biggest Making Waves Disability Days yet welcoming around 300 participants for a fun filled day on the water. Delivered in conjunction with John Walker Find Your Field of Dreams and the Halberg Foundation,

the event provides accessible, confidence-building activities for participants of all abilities. It was fantastic to see so many young people challenge themselves, have fun and enjoy the water in a supportive, inclusive environment.

Camp Quality

January 2025 saw 120 children living with cancer come to Trillian Wero Whitewater Park to enjoy a fun day on the water – some with caregivers and others going full tilt at every activity on offer. The John Walker Find You Field of Dreams

organisation put this event together and we were thrilled to be able to make the waterpark available for this exclusive use.



Counties Manukau Games

As part of the 2025 CM Games, Trillian Wero Whitewater Park and Wero Climb delivered two fun outdoor activities for year 5-8 students. Across two days, 150 students enjoyed our climbing course and 200 students took part in flat water, canoe slalom and canoe sprints.

The event was run in conjunction with CLM Sport, Canoe Slalom NZ and the Tu Manawa fund providing accessible, confidence-building experiences to support the CM Games' mission to celebrate culture, inclusivity and community.



Trillian Wero Whitewater Park Statistics 2026



18,112

children and youth engaged in school and community events



\$631,881.41

total community good value



150

schools participated in LEOTC programmes





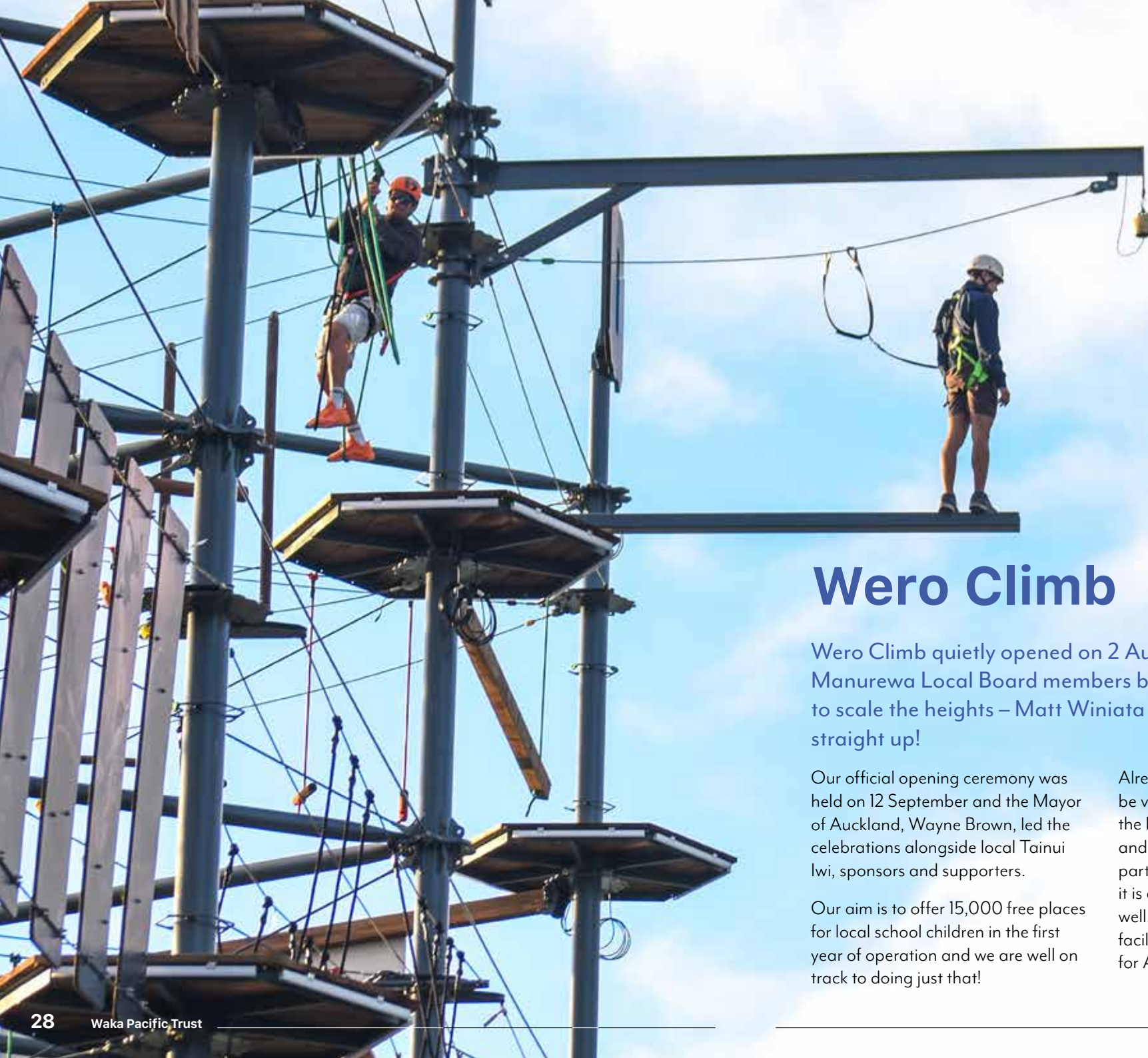
Welcome to Wero Climb!

After years in the making and raising more than \$3million, Wero Climb has finally debuted. We are delighted by the finished product and the way in which the community has embraced this amazing world-class facility.

Not only is this magnificent piece of engineering an asset for South Auckland, but for Auckland as a whole. Being the only such facility in the country, we declare Wero Climb to be the finest in New Zealand!

Thanks to Epsom Girls' Grammar for being the first official school to climb!





Wero Climb

Wero Climb quietly opened on 2 August 2025 with two Manurewa Local Board members being amongst the first to scale the heights – Matt Winiata and Glen Murphy went straight up!

Our official opening ceremony was held on 12 September and the Mayor of Auckland, Wayne Brown, led the celebrations alongside local Tainui Iwi, sponsors and supporters.

Our aim is to offer 15,000 free places for local school children in the first year of operation and we are well on track to doing just that!

Already, Wero Climb has proven to be very popular with schools and the local community. Corporate and social groups are actively participating in this challenge, and it is a big hit for birthday parties as well. We are excited to promote this facility as a major tourist attraction for Auckland.

Wero Climb Statistics 2026



6,105

children and youth engaged in school and community events



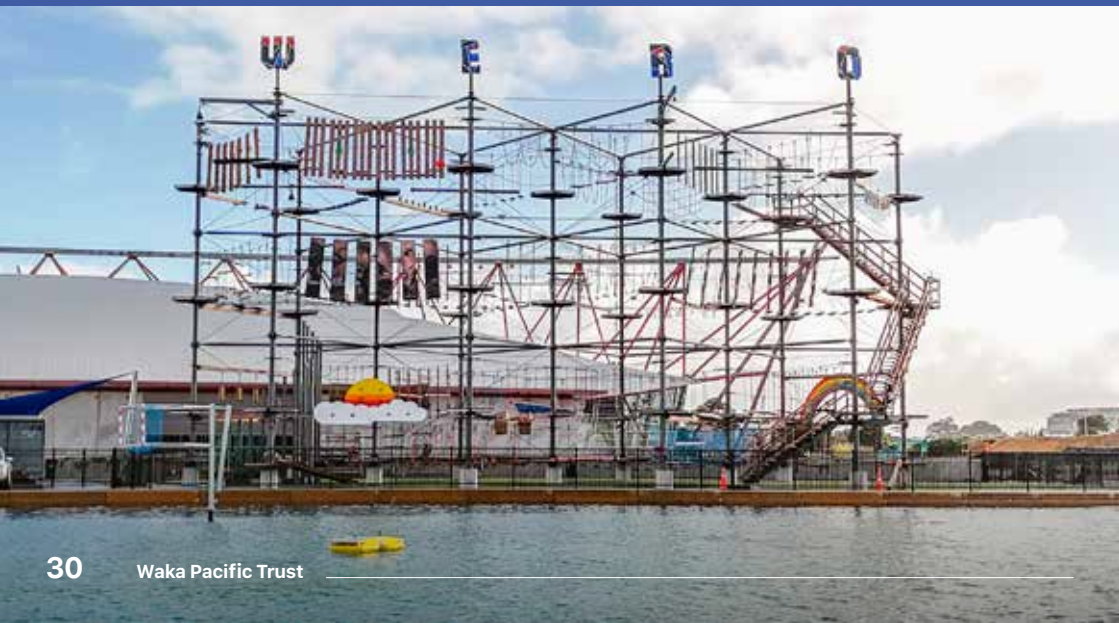
\$250,776.66

total community good value



82

schools participated in LEOTC programmes



Wero Climb Sponsors

A heartfelt thank you to our generous sponsors. Your support has been instrumental in helping us reach this point.



And thank you to our generous supporters/ambassadors.



The Highlights

Due Drop Events Centre

- **86,314** Children and young people attended and participated in events, programmes, competitions, concerts, graduations and community activities held at the venue.
- The venue remains a key hub for youth engagement, community connection, and accessible event delivery.
- Community Good Value is **\$622,026.48**.

Wero Whitewater Park

- **18,112** students and youth participated in our whitewater and water safety programmes.
- Programmes focused on developing water confidence, safety awareness, and survival skills in moving water.
- Community Good Value is **\$631,881.41**.

Wero Climb

- **6,105** students and youth participated in climbing experiences designed to build confidence, resilience, and teamwork.
- Wero Climb has strengthened our ability to deliver accessible adventure and goal-setting experiences for schools and community groups. We will deliver on our promise of 15,000 free spaces for our local community in the first year of operation.
- Community Good Value is **\$250,776.66**.

Total students and youth through our programmes:

110,531

Total Community Good Value 2026

\$1,504,684.55



Social return on investment

\$1: \$3.30

Every \$1 invested in Waka Pacific Trust results in \$3.30 returned to New Zealand

 **ImpactLab**

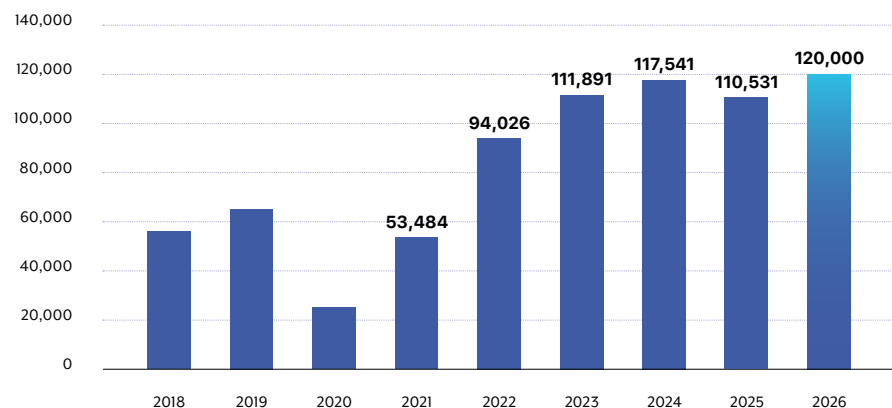
Our Progress

Our goal for 2025 was to continue building on the strong foundations established in previous years, ensuring children and young people could access meaningful, subsidised experiences through our programmes.

While this year presented a more challenging operating environment, due to increased pressures within schools resulting in reduced participation capacity, we remained committed to delivering high-quality opportunities that support youth development, confidence, and connection.

We are proud to have supported 110,531 students and young people across our facilities. The continued integration of Wero Climb has strengthened our overall offering, expanding the ways in which schools and community groups can engage with safe, inclusive adventure-based learning. These experiences encourage goal setting and provide a strong sense of satisfaction and personal pride as challenges are met and overcome.

Looking ahead to 2026, we are focused on rebuilding momentum and increasing participation across all programmes. Our goal is to reach 120,000 students and young people, using our programmes to enhance their classroom learning and development.



Thank you to our Sponsors





Every time you use our facilities you help support our youth through our water safety and creative arts programmes. ONE of yours will make a difference FOR ONE of ours.



Waka Pacific Trust

Proud custodians of Due Drop Events Centre, Vector Whitewater Park and Wero Climb on behalf of the community.
770 Great South Rd, Manukau 2104

www.wakapacific.org.nz